



NOXmatic®
Compliance out-of-the-box



NOXmatic® - A Type Ultra-Low NOx Burner

KEY FEATURES:

- Sub-9 ppm NOx compliance out-of-the-box
- No Flue Gas Recirculation required
- High efficiency variable speed blower
- Swing-open access to all internal components
- Simple operation and maintenance
- Lower installation costs

DESCRIPTION:

The NOXmatic® combines our proven high performance axial airflow burner design with ultra low NOx technology to create a very compact, quiet, and energy efficient unit. The premix design uses a metal fiber mat firing head and requires no FGR to deliver single digit NOx emissions, making it a simple and cost effective solution for almost any firetube, firebox or watertube boiler.

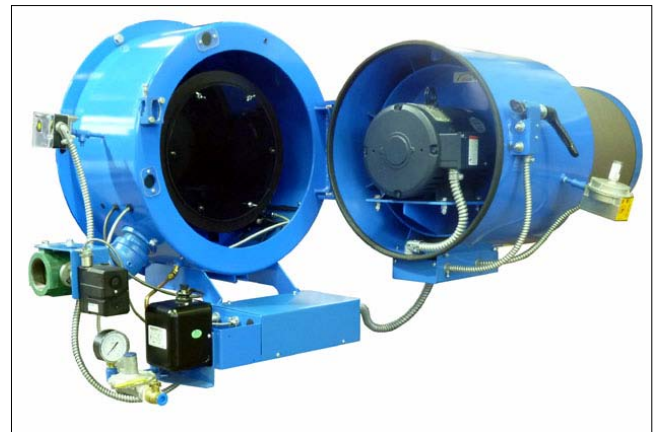
NOXmatic® A-type systems are available in ten sizes up to 33,000 MBH (800 boiler HP) firing natural or LP gas. All feature our exclusive axial-flow blower that results in a lower horsepower requirement and the lowest noise levels of any packaged forced-draft burner in the market.

Efficiency and performance is further enhanced by a variable speed blower (VSB) package, supplied as standard equipment with all A-type packages. VSBs provide significant cost savings with a 20 to 40% reduction in electrical consumption compared to single-speed blowers.

The innovative design also features S.T. Johnson's trademark swing-open housing that allows easy access to all burner components without removing the burner from the boiler. The firing head, igniter, flame detector and blower motor can all be accessed and removed for service in just minutes to minimize down time and service costs.



Model NM300A firing a 300 HP watertube boiler at sub-9 ppm NOx.



The exclusive axial flow blower housing swings open, providing easy access to all internal components including the scanner, igniter, and combustion head.

**The Johnson NOXmatic® burner provides
Sub-9 ppm Ultra Low NOx with Lower Costs!**

JOHNSON NOXmatic® A - Type

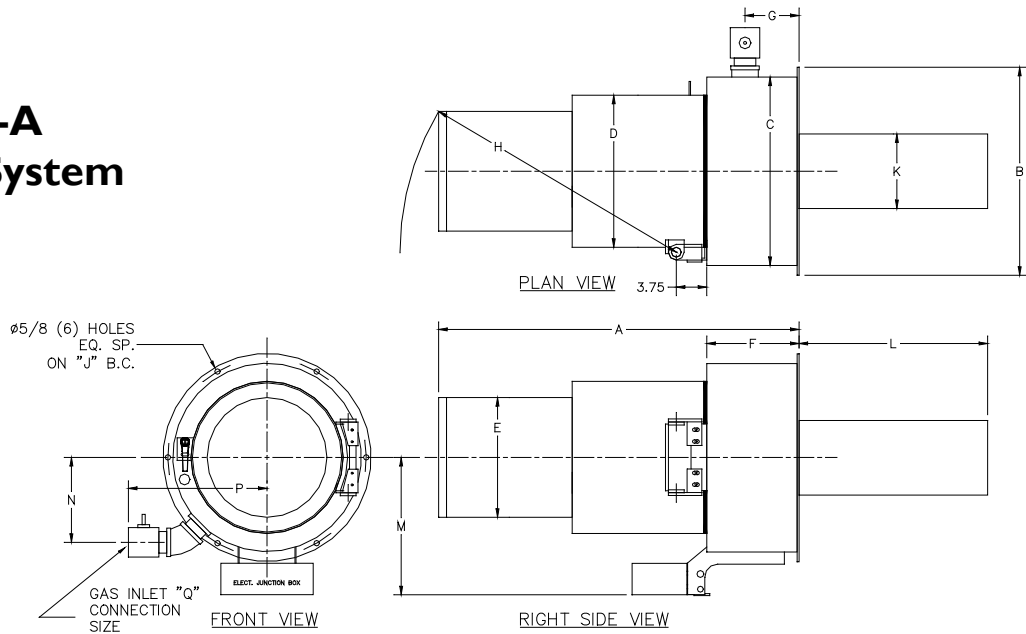
Capacities & Specifications

Burner Size	Capacities (1) Gas MBH	Boiler HP	Blower HP (2)	Emissions (3)	
				NO _x (ppmdv)	CO (ppmdv)
100	4,200	100	5	9	50
125	5,250	125	5	9	50
150	6,300	150	7.5	9	50
200	8,400	200	10	9	50
250	10,500	250	15	9	50
300	12,600	300	15	9	50
350	14,700	350	20	9	50
400	16,800	400	25	9	50
500	21,000	500	30	9	50
600	25,200	600	40	9	50
800	33,600	800	50	9	50

- (1) Gas input based on 1,000 BTU/CF gas & 0.64 specific gravity. Boiler capacity based on a minimum of 80% combustion efficiency. Burner capacity and blower motor HP rated for 0.75" w.c. furnace pressure at sea level and 60 cycle current.
- (2) Higher furnace pressure may require a larger burner size and motor HP requirements. Always consult factory for job specific requirements.
- (3) Typical emissions corrected to 3% O₂. Capacities and specifications shown for 9 ppm NO_x. Control system selection & boiler design greatly affect emissions performance. Always consult with factory for emissions and capacity guarantee.

Dimensions (inches)

NM-A 9 ppm System



Size	A	B	C	D	E	F	G	H	J	K	L	M	N	P	Q
100-150	46	26.5	24	19.38	15.25	11.75	6.625	35.25	25.25	9.5	*	17.5	10.5	17.75	2
200	57	31.5	29	28.75	19.63	13	8	40	35.25	11	*	21.5	12.5	20	2.5
250-300	57	31.5	29	28.75	19.63	13	8	40	35.25	15	*	21.5	12.5	20	2.5
350-400	62	36.5	34	28.88	20	13.5	8	45	35.25	16	*	24	14.63	24	3
500-600	70	41	38	32.88	27.25	17.5	10	58.38	39.5	20	*	24	18	26	3
800	72	41	38	32.88	39	17.5	10	60	39.5	21.5	*	24	18	26	3

Note: Specifications and dimensions are subject to change without notice. Dimensions and specifications may change according to the application and emission reduction goals. Always consult factory for current information. Minimum firetube diameter shall be dimension K plus 12 inches. *Consult factory where noted.

S.T. JOHNSON COMPANY

PO Box 8627, Oakland, CA 94608 U.S.A.

Tel: (510) 652-6000 – Fax: (510) 652-4302

www.JOHNSONBURNERS.com